

S.K.N. Sinhgad School of Business Management, Pune-41

Student Satisfaction Survey Report 2019-2020

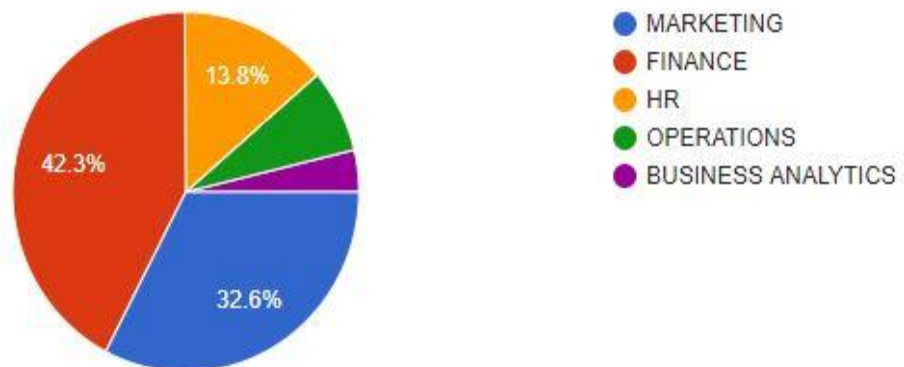
Student Satisfaction survey has been conducted regarding Teaching – Learning and Evaluation, which will help to upgrade the quality in higher education.

A web link for survey is <https://forms.gle/cZepPhif1ZKMUeMR8>

Summary

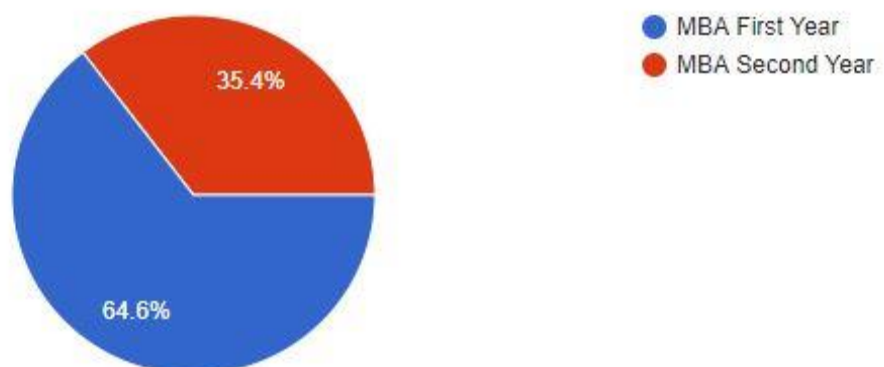
Specialization

239 responses



In which year you are studying

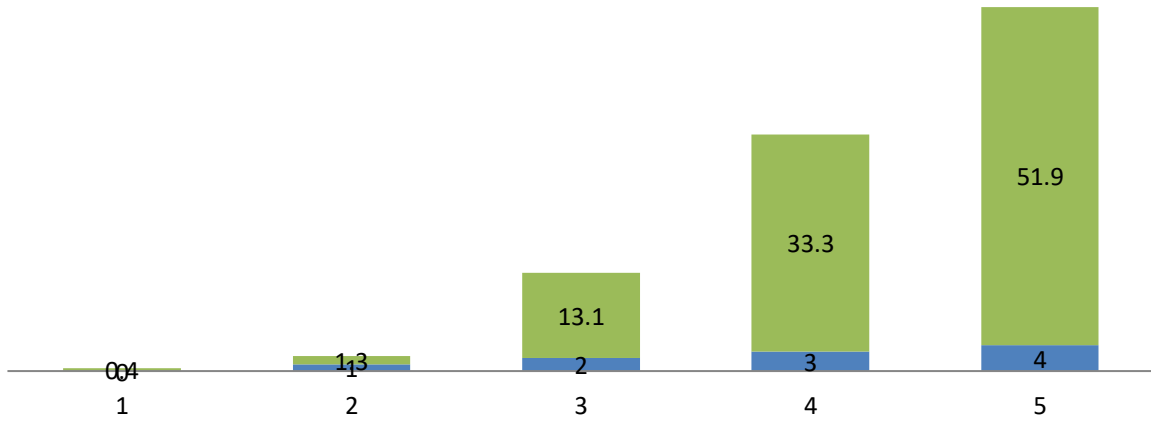
240 responses



Student response about teachers preparation for the Class

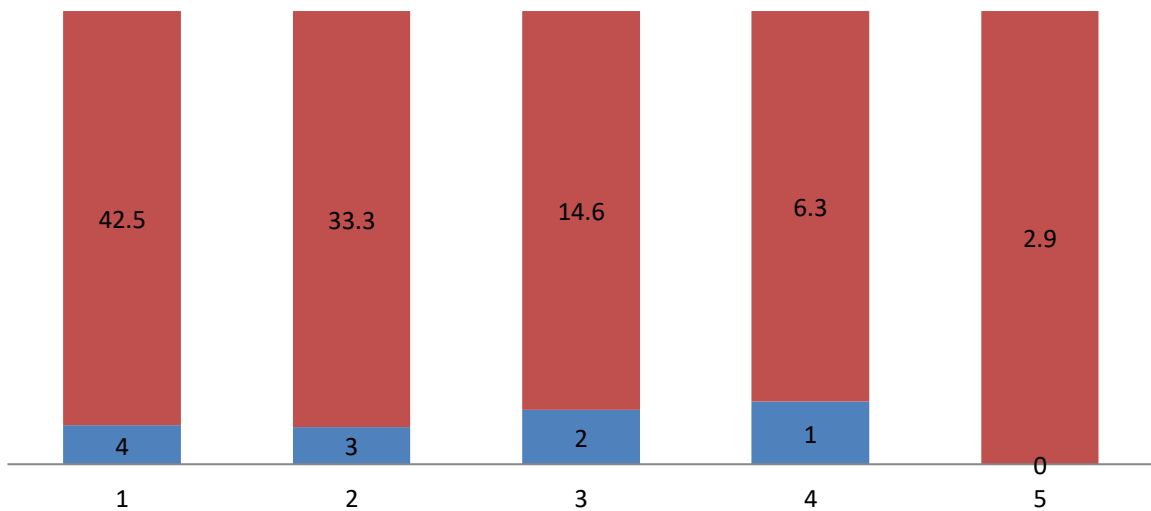
■ Responses %

■ 4 – Thoroughly 3 – Satisfactorily 2 – Poorly 1 – Indifferently 0 – Won't teach at all]



Student response about syllabus Covered

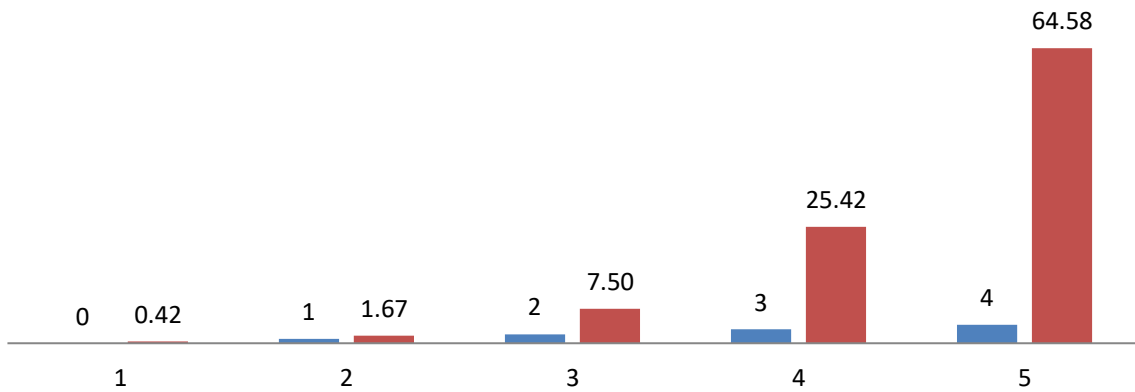
■ ■ Responses %



Student Opinion about how well were the teachers able to communicate

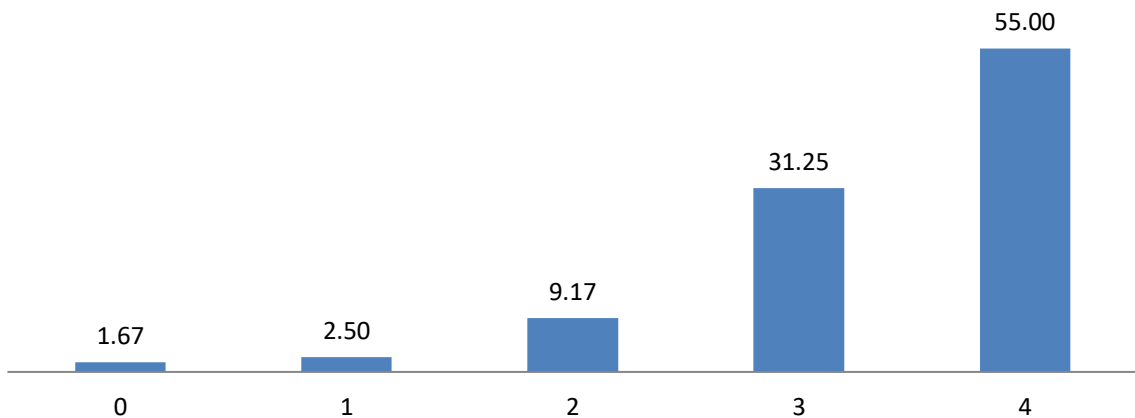
■ 4 – Always effective 3 – Sometimes effective 2 – Just satisfactorily 1 – Generally ineffective 0 – Very poor communication

■ Responses (%)

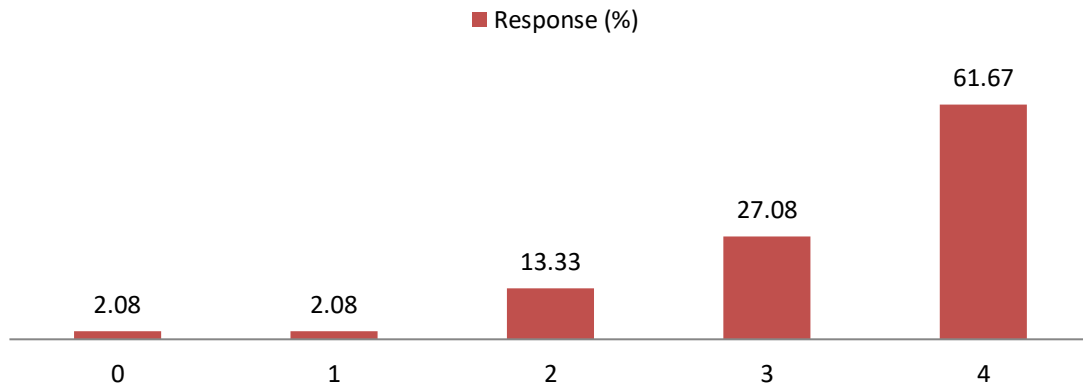


Student Opinion on teacher's approach to teaching can best be described as 4 – Excellent 3 – Very good 2 – Good 1 – Fair 0 – Poor]

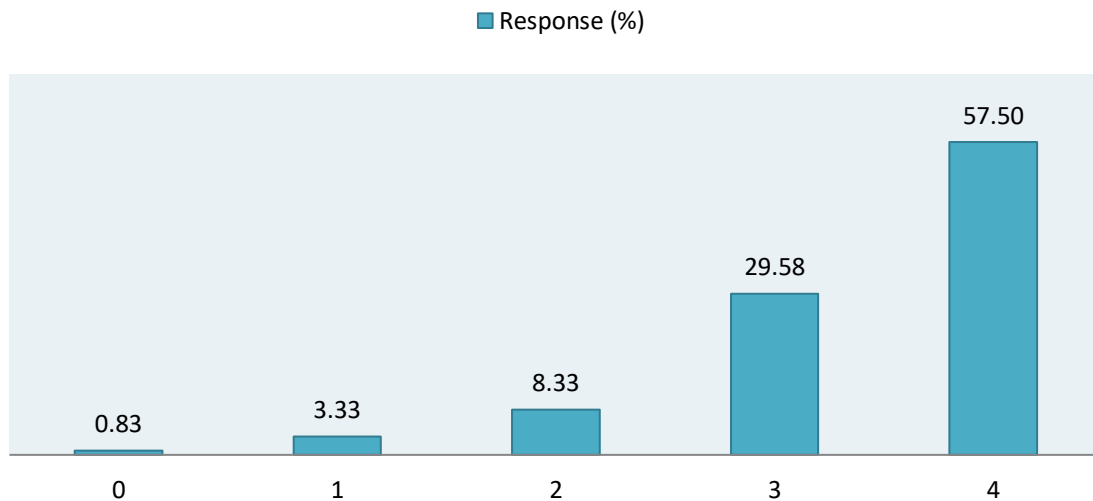
■ Response in %



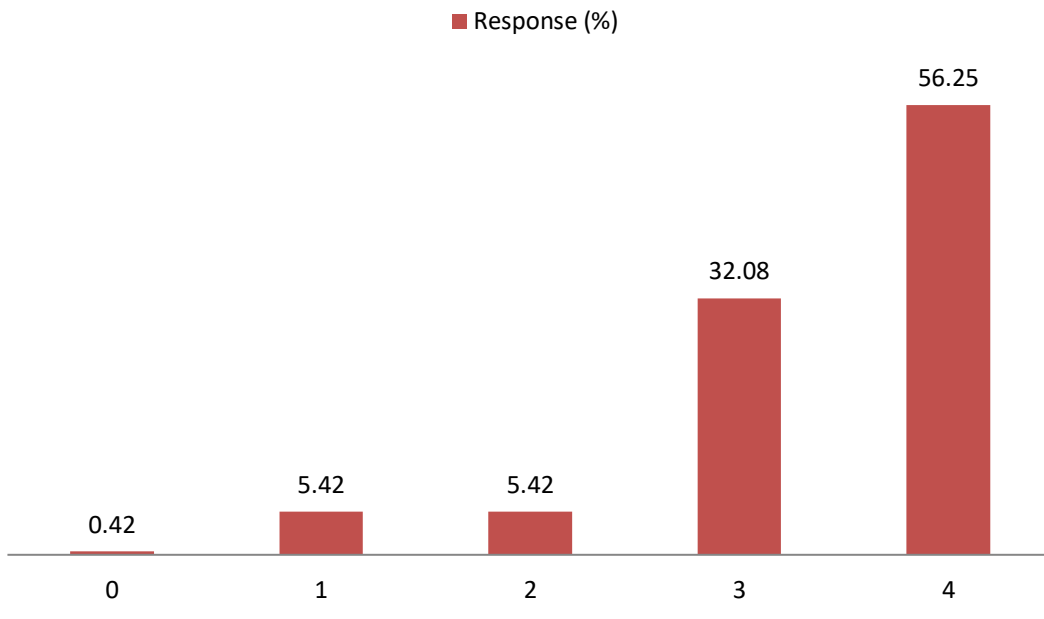
**Student Opinion about fairness of the internal evaluation process by the teachers.
4 – Always fair 3 – Usually fair 2 – Sometimes unfair 1 – Usually unfair 0 – Unfair]**



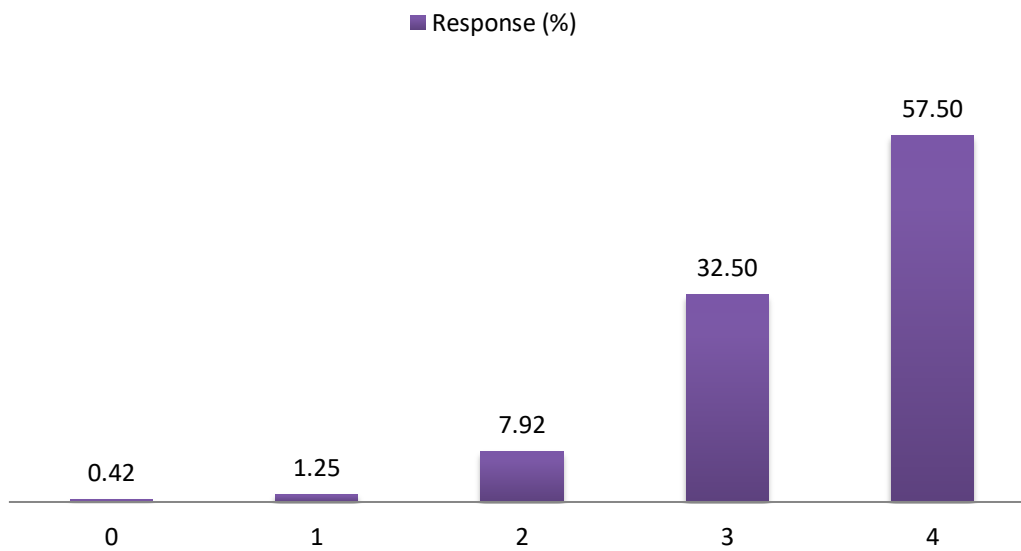
Student Opinion about performance in assignments discussed . 4 – Every time 3 – Usually 2 – Occasionally/Sometimes 1 – Rarely 0 – Never]



Students Opinion about the institute takes active interest in promoting internship, student exchange, field visit

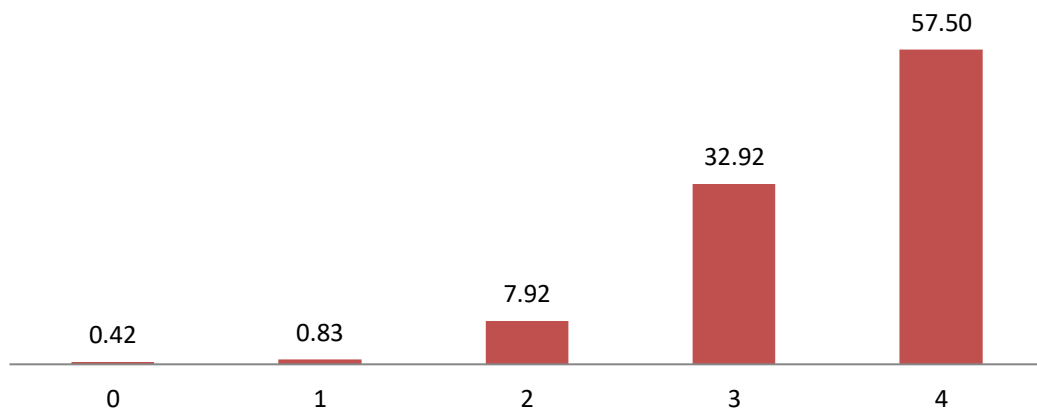


Student Opinion about the teaching and mentoring process in your institution facilitates you in cognitive, social and emotional growth.
4 – Significantly 3 – Very well 2 – Moderately 1 – Marginally 0 – Not at all]



Student Opinion institute - The institution provides multiple opportunities to learn and grow. 4 – Strongly agree 3 – Agree 2 – Neutral 1 – Disagree 0 – Strongly disagree

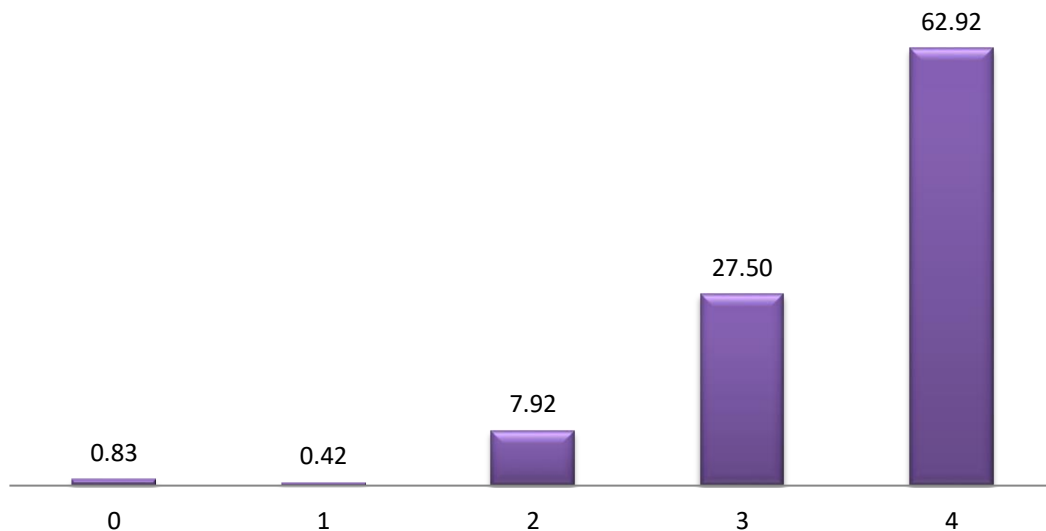
■ Response (%)



Student Opinion about Teachers inform you about your expected competencies, course outcomes and programme outcomes.

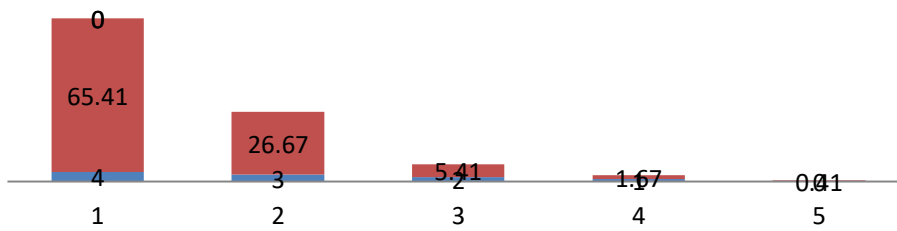
4 – Every time 3 – Usually 2 – Occasionally/Sometimes 1 – Rarely 0 – Never

■ Response(%)



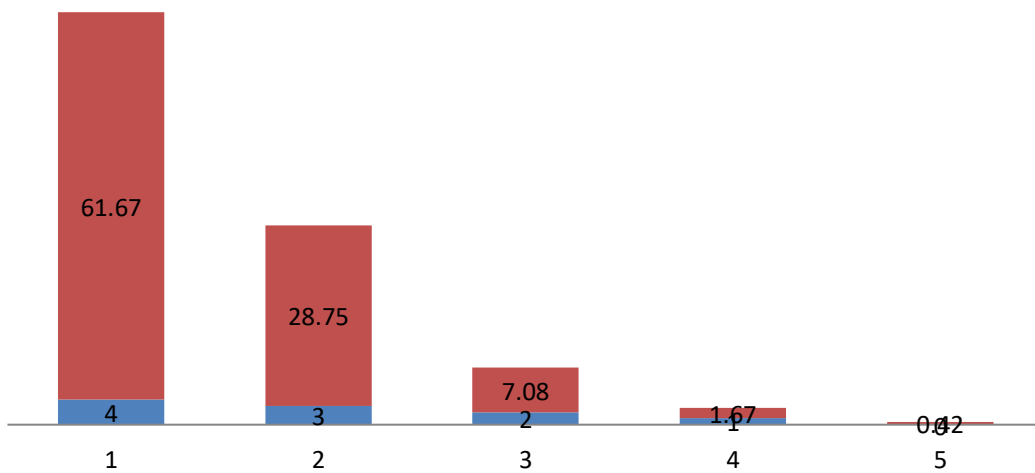
**Student Opinion about Mentor -
mentor does a necessary follow-up
with an assigned task to you.
4 – Every time 3 – Usually 2 –
Occasionally/Sometimes 1 – Rarely 0
– I don't have a mentor**

■ Series1 ■ Series2 ■ Series3 ■ Series4



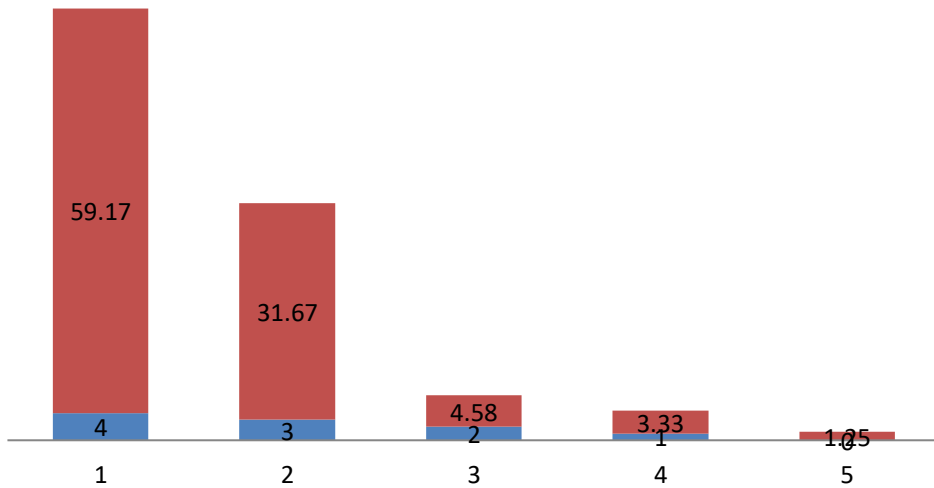
**Student Opinion about teacher teaching :The teachers illustrate the
concepts through examples and applications. 4 –
Every time 3 – Usually 2 – Occasionally/Sometimes 1 – Rarely 0 – Never**

■ Series1 ■ Series2



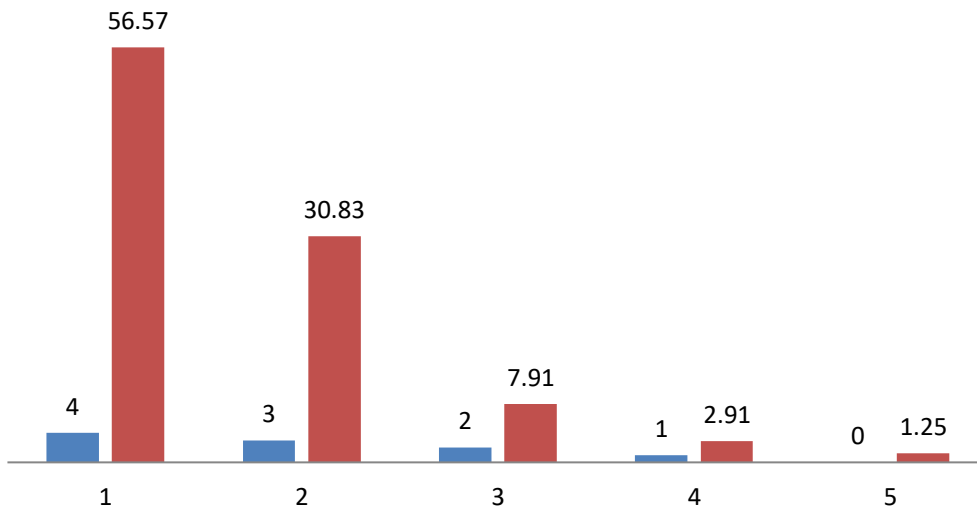
Student opinion about teacher - Teacher identify your strenghts and encourage you with providing right level of challenges. 4 – Fully 3 – Reasonably 2 – Partially 1 – Slightly 0 – Unable to

■ Series1 ■ Series2

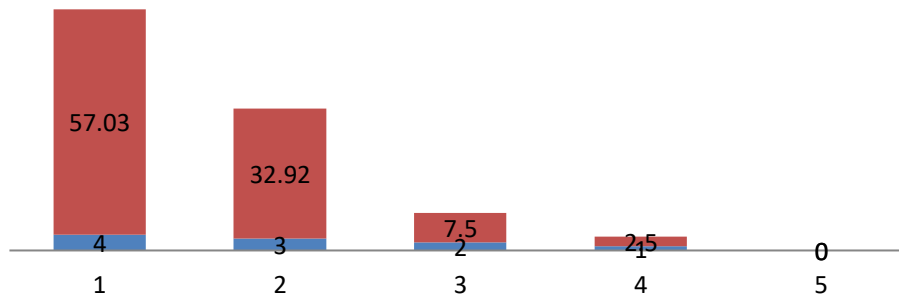


Student Opinion about teacher -Teachers are able to identify your weaknesses and help you to overcome them. 4 – Every time 3 – Usually 2 – Occasionally/Sometimes 1 – Rarely 0 – Never

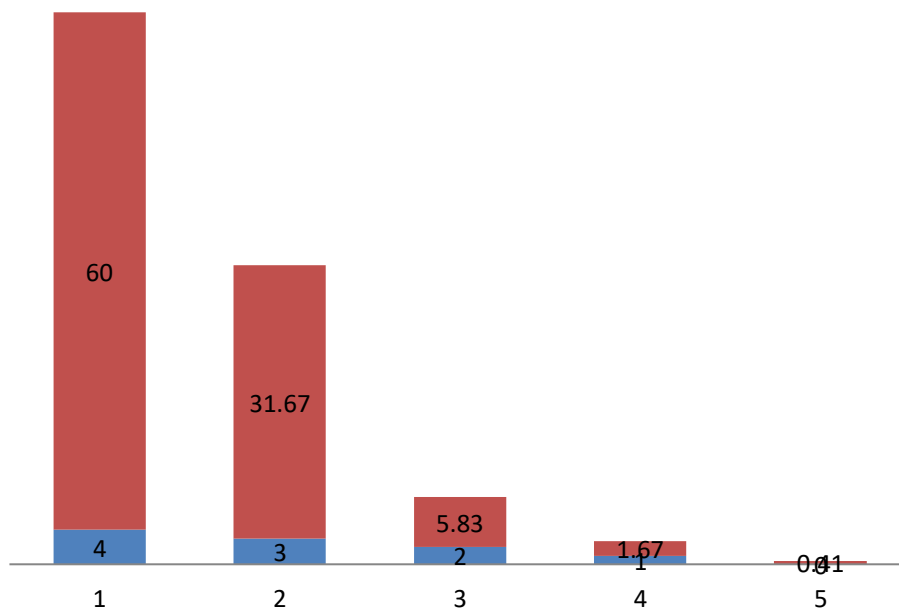
■ Series1 ■ Series2

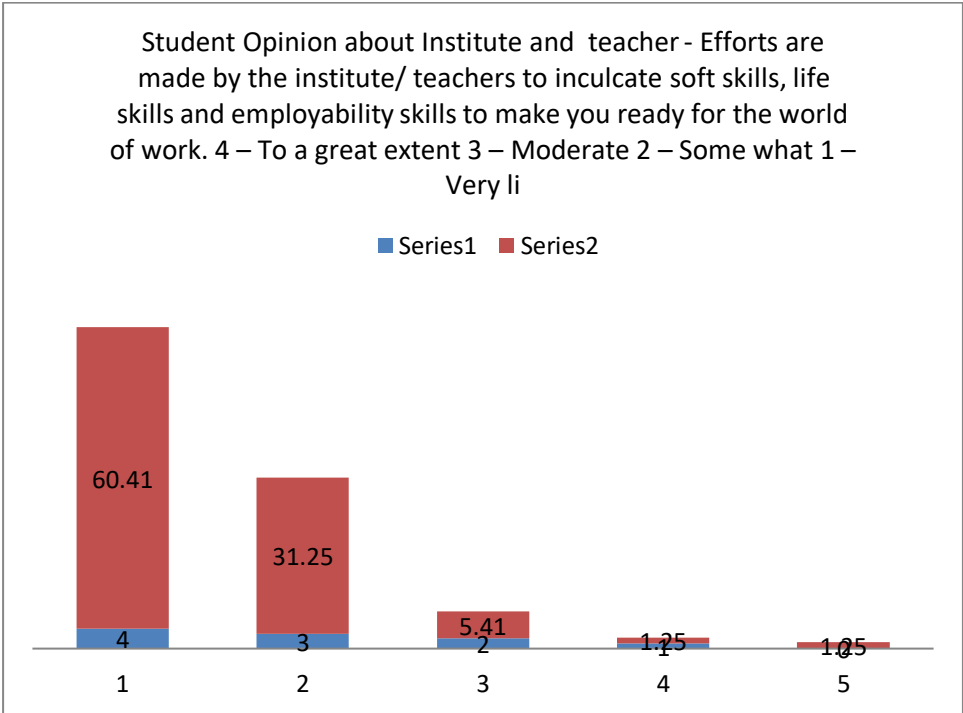
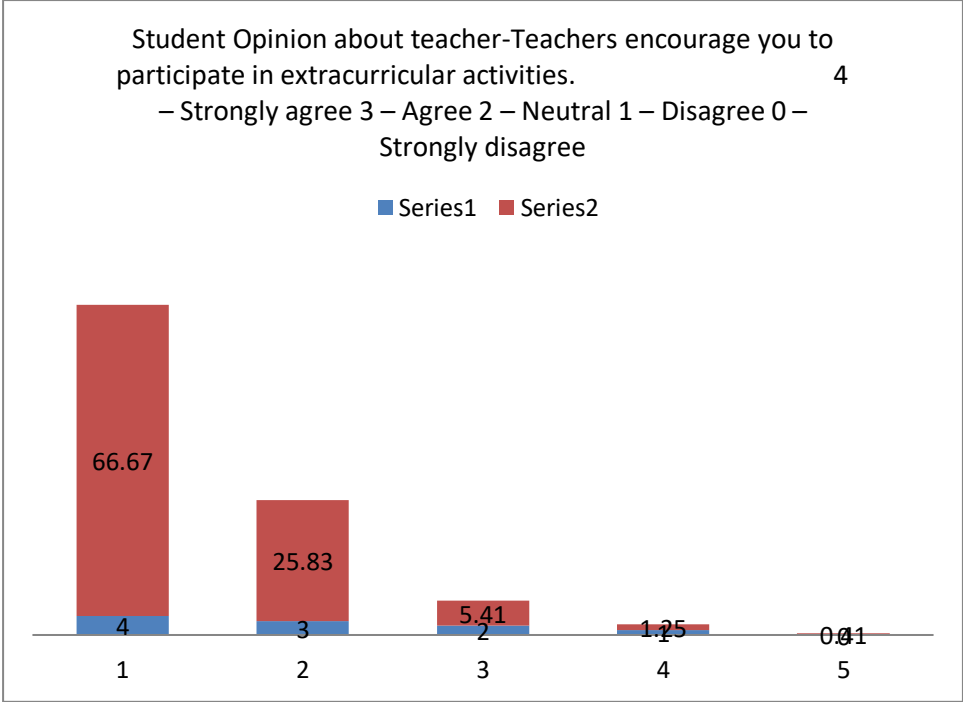


Student Opinion about Institution -The institution makes effort to engage students in the monitoring, review and continuous quality improvement of the teaching learning process. 4 – Strongly agree 3 – Agree 2 – Neutral 1 – Disagree 0 – Strong



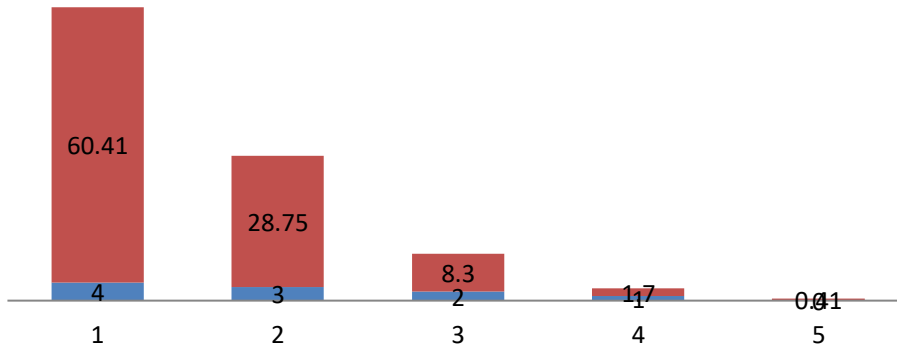
Student Opinion about teacher and student The institute/ teachers use student centric methods, such as experiential learning, participative learning and problem solving methodologies for enhancing learning experiences. 4 – To a great extent 3 – ModModera





Student Opinion about percentage of teachers use ICT tools such as LCD projector, Multimedia, etc. while teaching. 4 – Above 90% 3 – 70 – 89% 2 – 50 – 69% 1 – 30 – 49% 0 – Below 29%

■ Series1 ■ Series2



Student Opinion about the overall quality of teaching-learning process in your institute is very good. 4 – Strongly agree 3 – Agree 2 – Neutral 1 – Disagree 0 – Strongly disagree

■ Series1 ■ Series2

